

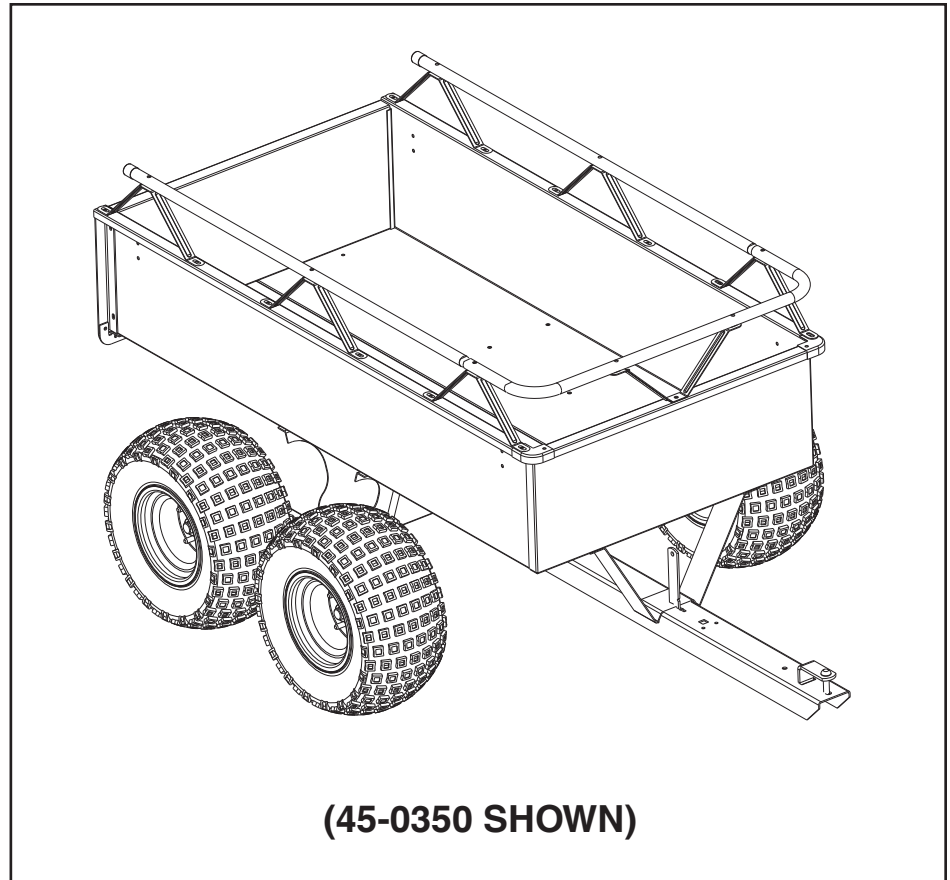
Agri+Fab™

**OWNERS
MANUAL**

Model No.

**45-0350 (ATV)
45-0351 (FARM)**

CAUTION:
Read Rules for
Safe Operation
and Instructions
Carefully



TANDEM AXLE CART

IMPORTANT!

The wheel bearings are not pre lubricated.
The wheel hubs must be filled with grease after
the wheels are assembled to the axle.

- Safety
- Assembly
- Operation
- Maintenance
- Parts

SpeedEPart *the fastest way to purchase parts* www.speedepart.com

SAFETY RULES

Remember, any power equipment can cause injury if operated improperly or if the user does not understand how to operate the equipment. Exercise caution at all times when using power equipment.



LOOK FOR THIS SYMBOL TO POINT OUT IMPORTANT SAFETY PRECAUTIONS. IT MEANS—ATTENTION! BECOME ALERT! YOUR SAFETY IS INVOLVED.

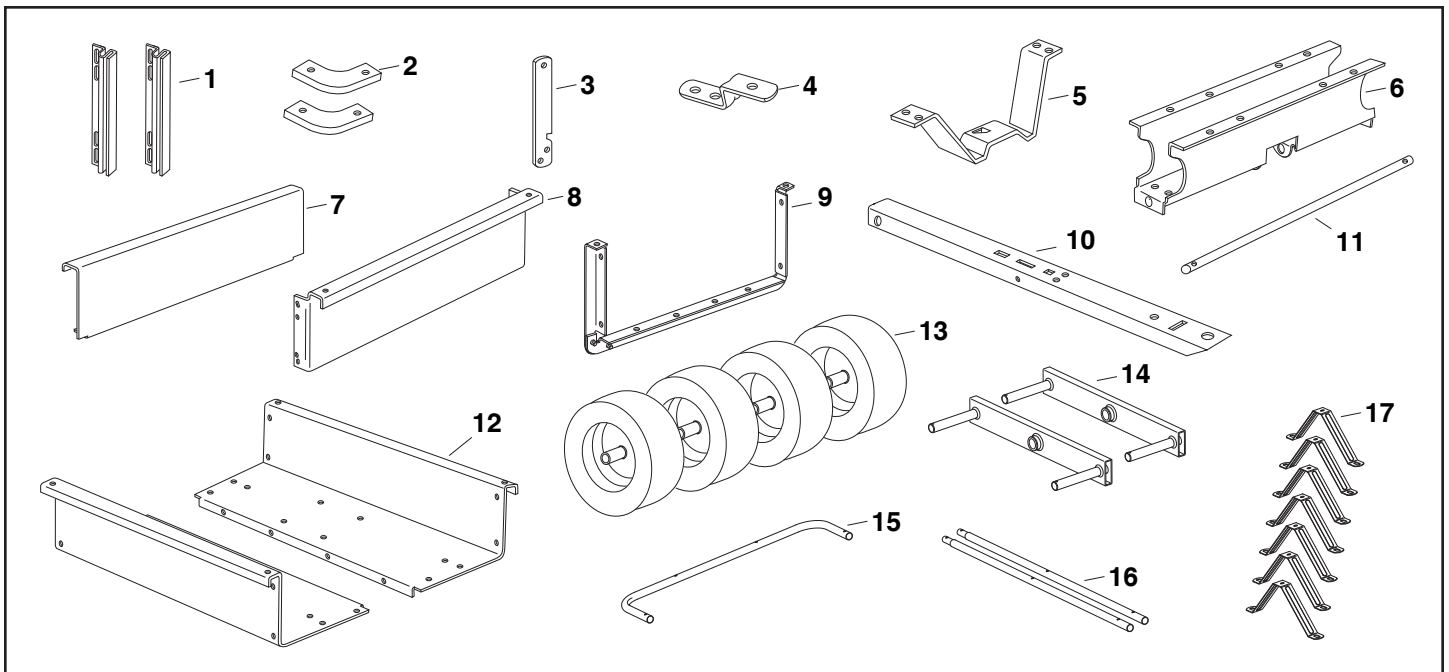


CAUTION: VEHICLE BRAKING AND STABILITY MAY BE AFFECTED WITH THE ADDITION OF AN ACCESSORY OR AN ATTACHMENT. BE AWARE OF CHANGING CONDITIONS ON SLOPES.

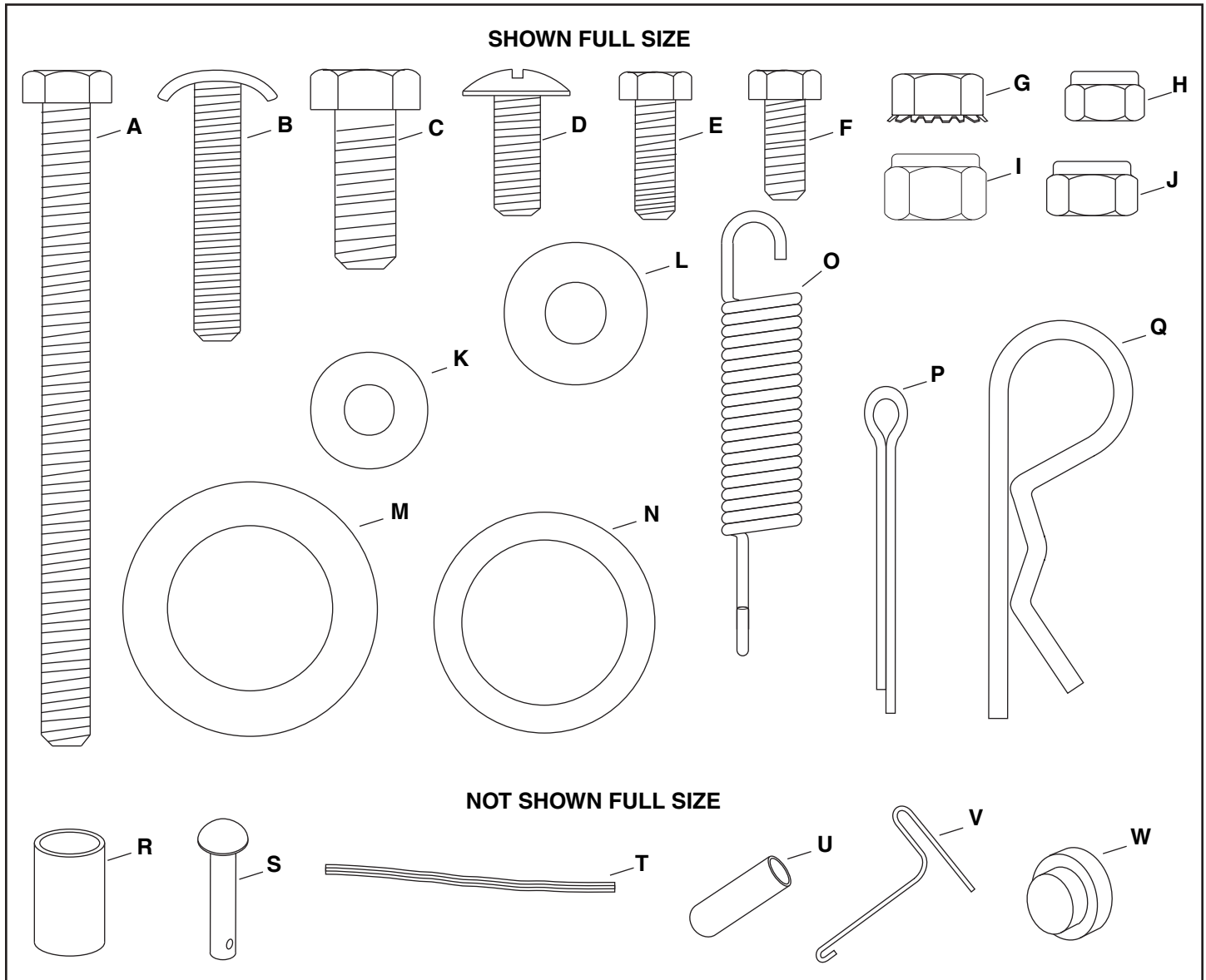
1. Read this owners manual before attempting to assemble or operate the cart.
2. Read the vehicle owners manual and know how to operate your vehicle, before using the cart attachment.
3. Do not at any time carry passengers in this cart. It has not been designed to carry passengers.
4. Never allow children to operate the vehicle or the cart attachment.
5. Do not allow adults to operate the vehicle or cart attachment without proper instructions.
6. Always begin with the transmission in first (low) and gradually increase speed as conditions permit.
7. Tow the cart at reduced speed over rough terrain and hillsides or near creeks and ditches to prevent tipping over and loss of control. Do not drive too close to a creek or ditch.
8. Vehicle braking and stability will be affected with the attachment of this cart. Do not fill cart to maximum weight capacity without checking the capability of the towing vehicle to safely pull and stop with the cart attached.
9. Before operating vehicle on any grade (hill) refer to the safety rules in the vehicle owner's manual concerning safe operation on slopes. Refer also to the slope guide on page 9 of this manual. **Stay off steep slopes!**
10. Do not tow this cart on highways or on public thoroughfares.
11. Follow maintenance and lubrication instructions as outlined in this manual.

CARTON CONTENTS

- | | | |
|------------------------|-----------------------------------|---------------------------|
| 1. Tailgate Guides (2) | 8. Front Panel | Model 45-0350 only |
| 2. Corner Caps (2) | 9. Tailgate Reinforcement Bracket | 15. Front Rail |
| 3. Latch Lock Lever | 10. Draw Bar Tongue | 16. Side Rail (2) |
| 4. Hitch Bracket | 11. Axle | 17. Rail Brace (7) |
| 5. Latch Stand Bracket | 12. Cart Body (2) | |
| 6. Wheel Support | 13. Wheels (4) | |
| 7. Tailgate | 14. Walking Beam (2) | |



CARTON CONTENTS



HARDWARE PACK

Ref.	Description	45-0350	45-0351	Ref.	Description	45-0350	45-0351
A	Hex Bolt, 5/16-18 x 4"	1	1	M	1" Thin Washer, (8 pcs. extra)	12	12
B	Curved Head Bolt	8	--	N	1" Thick Washer	4	--
C	Hex Bolt, 3/8" x 1"	1	1	O	Spring	1	1
D	Truss Hd. Bolt, 5/16" x 3/4"	12	12	P	Cotter Pin, 1/8" x 1-1/2" Lg.	6	6
E	Hex Bolt, 1/4" x 3/4"	13	--	Q	Hair Cotter Pin 1/8"	1	1
F	Hex Bolt, 1/4" x 5/8"	21	25	R	Spacer	4	4
G	SEMS Nut, 5/16"	10	2	S	Hitch Pin	1	1
H	Nylock Nut, 1/4"	34	25	T	Protective Edging	2	--
I	Nylock Nut, 3/8"	1	1	U	Vinyl Cap	2	--
J	Nylock Nut, 5/16"	13	13	V	Spring Puller Tool	1	1
K	Flat Washer, 1/4"	13	--	W	Hub Cap	6	6
L	Flat Washer, 5/16"	2	--				

ASSEMBLY INSTRUCTIONS


TOOLS REQUIRED FOR ASSEMBLY

- (1) Screwdriver
- (1) Pliers
- (2) 7/16" Wrenches
- (2) 1/2" Wrench
- (2) 9/16" Wrenches
- (1) Grease Gun with general purpose grease

1. Remove the hardware pack and all loose parts from the carton. Be sure the carton is empty before discarding.
2. Lay out all parts as shown. Extra pieces of some items may be included in hardware pack.

NOTE: To prevent scratching paint, cover work surface with a mat or cardboard.

3. Position cart body halves upright on a smooth level surface such as a garage floor or a paved driveway. See figure 1.



CAUTION

Do not leave the cart unattended in the upright position. A falling cart can cause personal injury! Pay close attention to the stability of the cart while it remains in an upright position. For best stability, assemble on a smooth, level surface.

4. Assemble halves together using five 1/4" x 5/8" hex bolts and 1/4" nylock nuts as shown in figure 1. **Do not tighten yet.**

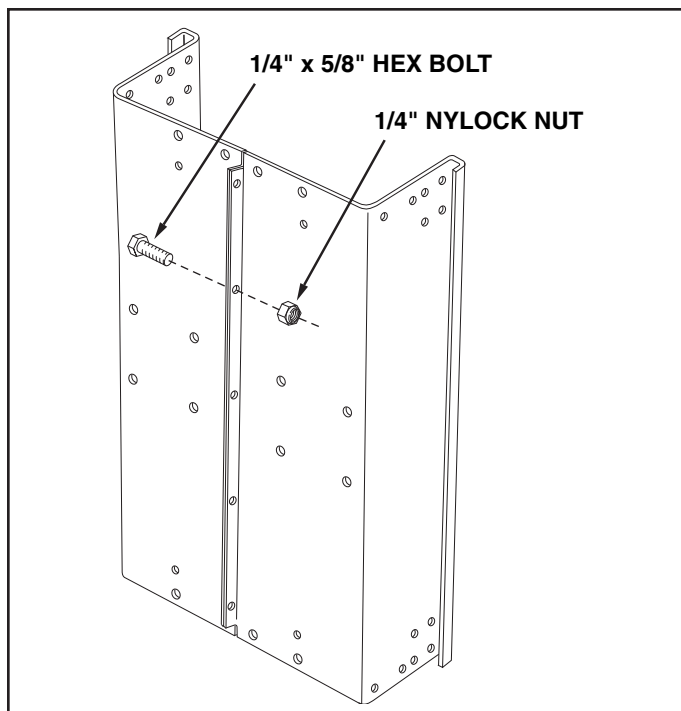


FIGURE 1

5. Position the tailgate reinforcement bracket on outside of cart as shown in figure 3. Assemble to the bottom of the cart body using four 5/16" x 3/4" truss head bolts and 5/16" nylock nuts. **Do not tighten yet.** See figure 2.
6. Position the tailgate guides on the inside of the cart bodies with guide channels to the front. Assemble using four 1/4" x 5/8" hex bolts and 1/4" nylock nuts. **Do not tighten yet.** See figure 2.
7. **(45-0351 only)** Fasten the ends of the tailgate reinforcement bracket to the top flange of the cart using two 1/4" x 5/8" bolts and 1/4" nylock nuts. See figure 2.
8. At this time, with the cart body halves pulled together, **tighten** the truss head bolts assembled in step 5 and then **tighten** the hex bolts assembled in steps 6 and 7. **Do not tighten** the bolts that were assembled in step 4.

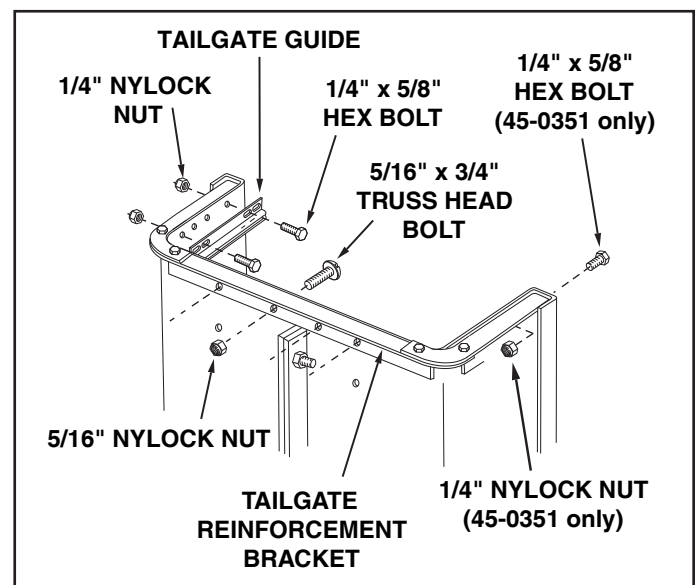


FIGURE 2

9. Carefully turn the cart over so that the tailgate reinforcement bracket is on the bottom. See figure 3.

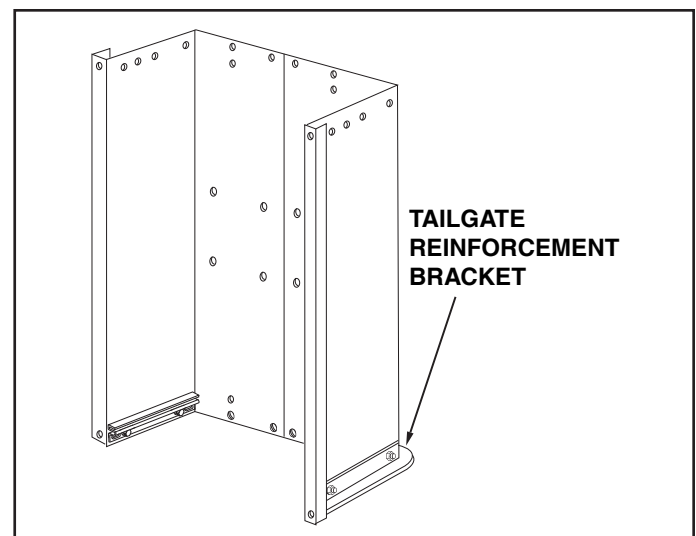


FIGURE 3

10. Assemble the front panel over the end of the cart using six 1/4" x 5/8" hex bolts and 1/4" nylock nuts as shown in figure 4. Leave two holes in the bottom of the panel empty as shown. Pull the cart body halves together and **tighten** the bolts in the bottom of the front panel, then **tighten** the bolts in the sides. See figure 4.
11. **Tighten** the bolts assembled in step 4 to fasten the bottom of the cart together.

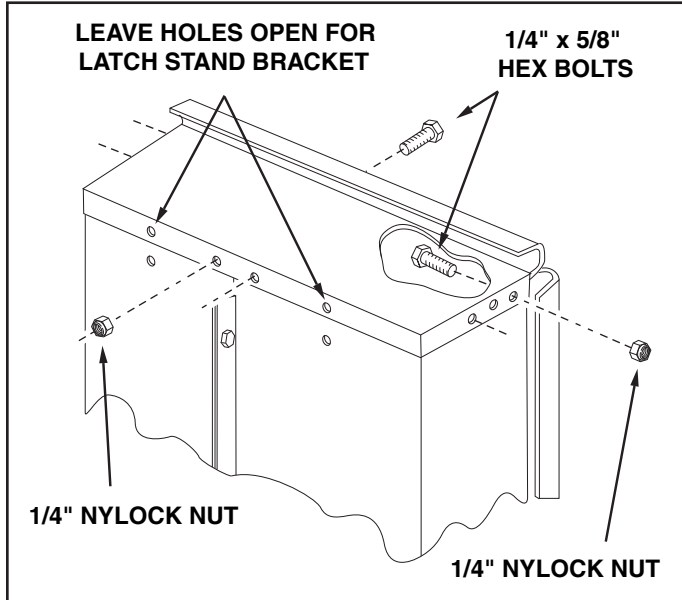


FIGURE 4

12. Assemble the latch stand bracket to the cart so that the aligning tab is at the bottom of the bracket. Use four 1/4" x 5/8" hex bolts and 1/4" nylock nuts. **Tighten**. See figure 5.
13. Assemble a corner cap to each front corner using **one or two** 1/4" x 5/8" hex bolts and 1/4" nylock nuts per cap. **Leave out the rear bolt** if the cart has top rails (model 45-0350 only). **TIGHTEN**. See figure 5.

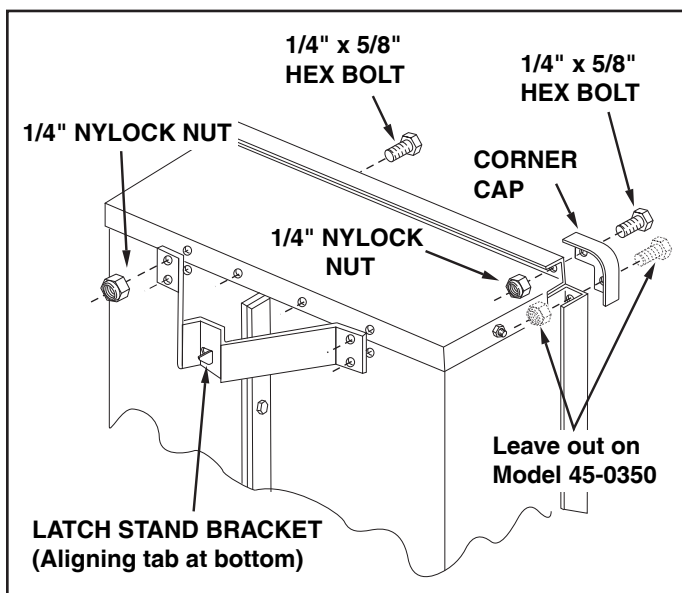


FIGURE 5

14. Assemble the wheel support to the cart using eight 5/16" x 3/4" truss head bolts and 5/16" nylock nuts as shown in figure 6. Heads of bolts go on the inside of the cart. **Tighten**.

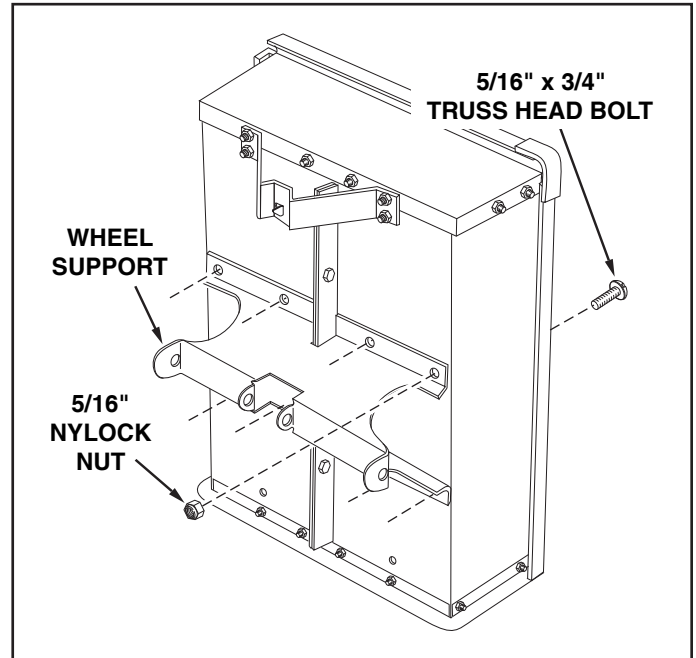


FIGURE 6

15. Lower the cart to rest upside down on its top flange with the wheel support facing up. See figure 7.
16. Lay the drawbar tongue (open side facing up) onto the Wheel Support and the Latch Stand Bracket. Slide the axle through the wheel support and the tongue. See figure 7.

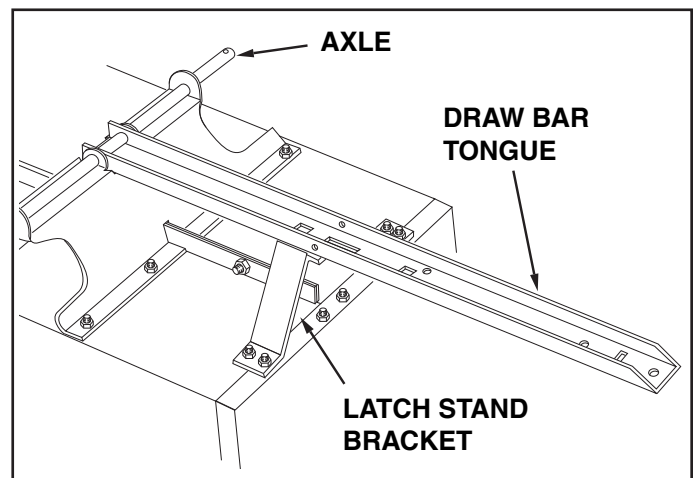


FIGURE 7

17. Place the latch lock lever through the slot in the tongue. Insert the 5/16" x 4" hex bolt through one side of the tongue. Assemble a (SEMS) hex nut, the lever and another (SEMS) hex nut onto the hex bolt. Insert the hex bolt through the opposite side of the tongue and assemble a 5/16" nylock nut onto the end of the hex bolt. Tighten so that the hex bolt can still rotate freely. Tighten the two (SEMS) hex nuts against each side of the latch lock lever so that it is centered in the slot. See figure 8.

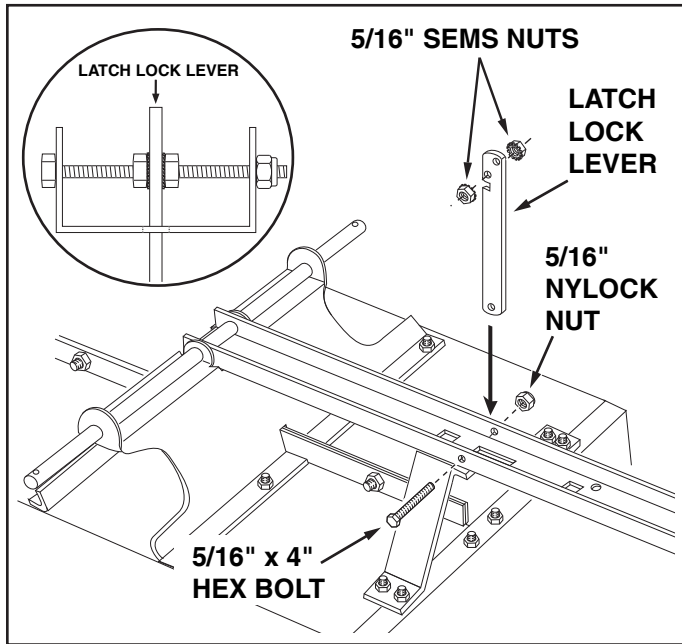


FIGURE 8

18. Hook the **short** end of the spring into the hole in the latch lock lever. Use the spring puller tool to hook the **long** end of the spring into the square hole in the tongue. The spring puller tool can be stored when finished. See figure 9.

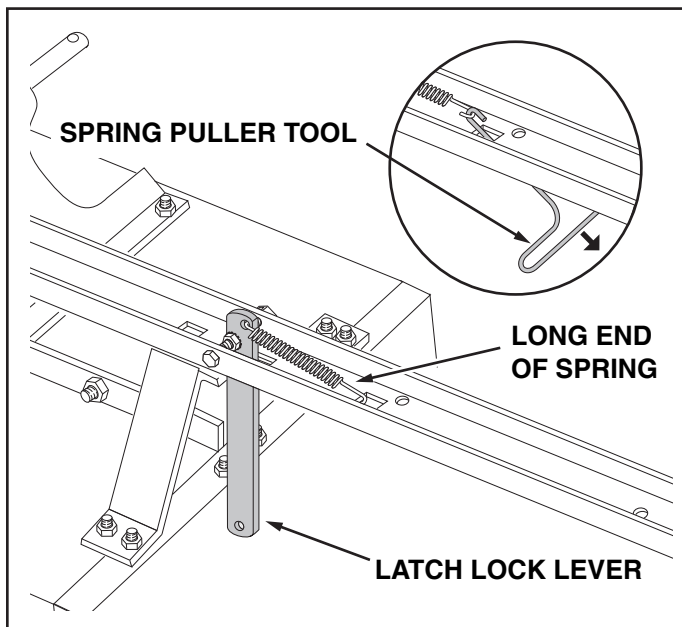


FIGURE 9

19. Assemble the end of the hitch bracket (two holes) up through the slot at the front of the drawbar tongue. Fasten it to the tongue using the 3/8" x 1" hex bolt and 3/8" nylock nut. **Tighten.** See figure 10.
20. Assemble the hitch pin through the hitch bracket and the tongue and secure it with the 1/8" hair cotter pin. See figure 10.

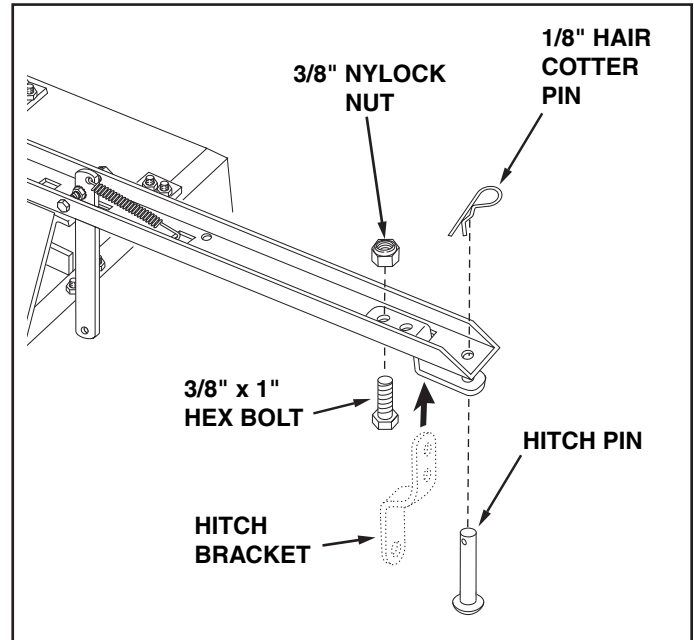


FIGURE 10

21. Assemble a 1" thin washer, a walking beam and another 1" thin washer onto the pivot axle. Insert a cotter pin into the axle and spread the ends. Press a hub cap onto the flat washer. Repeat on the other end of the pivot axle. See figure 11.

NOTE: Eight extra 1" flat washers are provided to take up end play if necessary.

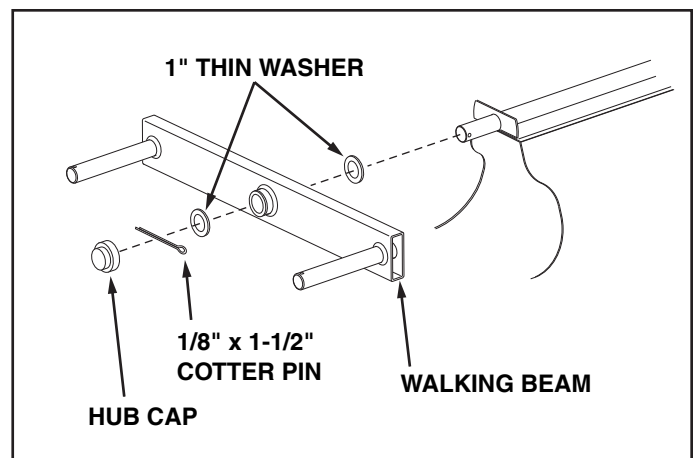


FIGURE 11

22. Assemble a 1" thin washer, a spacer, a 1" thick washer (model 45-0350 only), a wheel with the valve stem facing out, and another 1" thin washer onto a wheel axle. Insert a cotter pin into the axle and spread the ends. Repeat for the other three wheels. See figure 12.

NOTE: Eight extra 1" thin washers are provided to take up end play if necessary.

23. Press a hub cap onto the flat washer on each of the four wheels. See figure 12.
24. Check tire pressure (max. psi printed on tire).
25. Pump the wheel hubs full of general purpose grease.

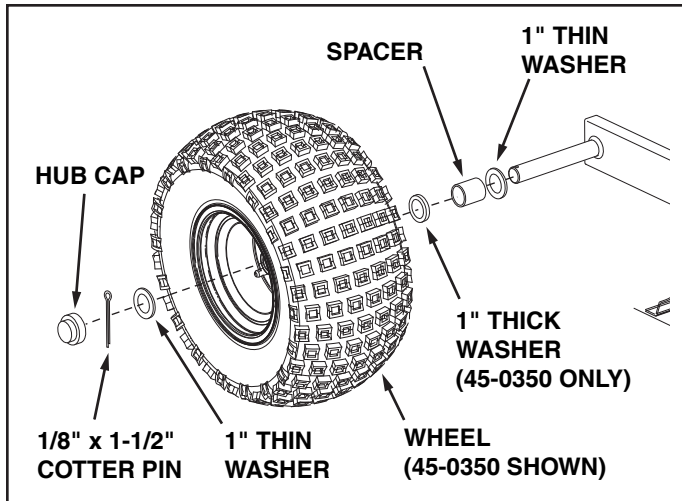


FIGURE 12

IMPORTANT: Make sure the drawbar tongue is locked to the latch stand bracket by the latch lock lever.

26. Turn cart over onto its wheels.
27. (Model 45-0350 only) Press the protective edging strips onto the ends of the tailgate. See figure 13.
28. Slide the tailgate down into the tailgate guides so that the holes in the bottom of the tailgate fit over the screws in the bottom of the cart bed. See figure 13.

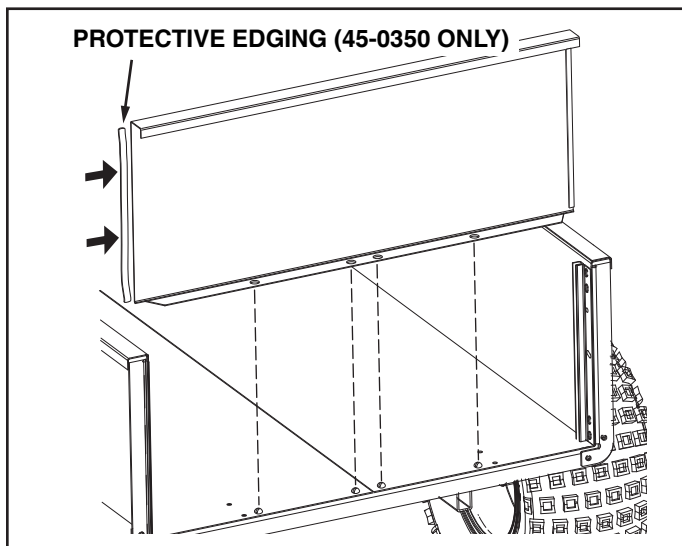


FIGURE 13

ASSEMBLING RAILS - MODEL 45-0350 ONLY

29. Assemble seven rail braces to the top flange on the sides and the front of the cart bed. Use thirteen 1/4" x 3/4" hex bolts, 1/4" flat washers and 1/4" nylock nuts. **Do not tighten yet.** See figure 14.

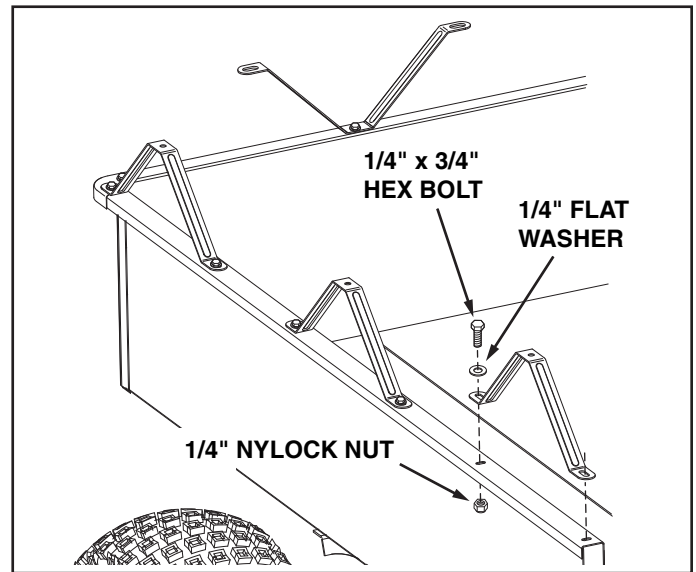


FIGURE 14

30. Insert the ends of the side rails into the front rail so that the holes align. See figure 15.
31. Assemble the side rails to the rail braces on the sides of the cart using six curved head bolts and 5/16" SEMS nuts. **Tighten all** loose nuts and bolts. See figure 15.
32. Assemble the front rail to the rail brace on the front of the cart using two curved head bolts, 5/16" flat washers and 5/16" SEMS nuts. **Tighten all** loose nuts and bolts. See figure 15.
33. Assemble two vinyl caps onto the ends of the side rails. See figure 15.

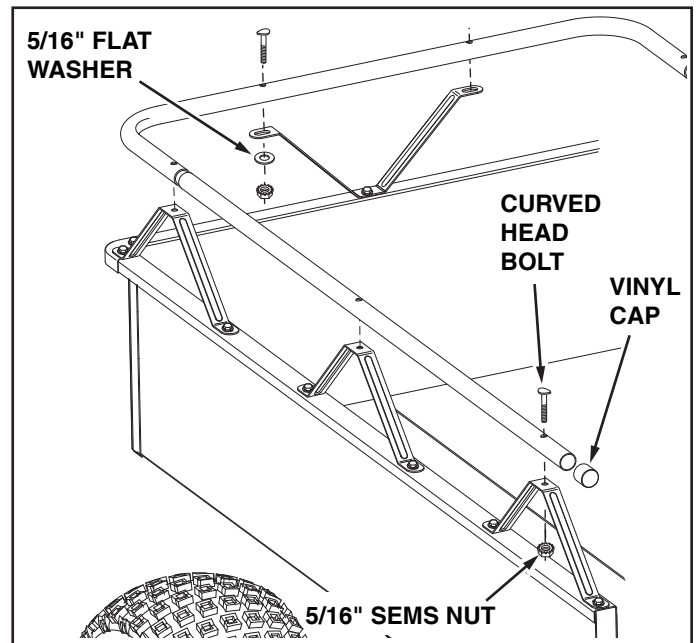


FIGURE 15

OPERATION



CAUTION: Vehicle braking and stability may be affected with the addition of an accessory or an attachment. Be aware of changing conditions on slopes.

1. Refer to the vehicle operator's manual for instructions on safe operation on slopes.
2. Always operate at reduced speed on slopes.
3. Do not operate an ATV towing the cart on a slope greater than 15 degrees.
4. Do not operate a tractor towing the cart on a slope greater than 10 degrees. Use the slope guide on page 9 of this manual.



NOTE

DO NOT EXCEED WEIGHT CAPACITY OF CART

(See the specifications on this page for each model)

One cubic foot of dirt weighs approximately 80 lbs.

5. For best handling and traction, distribute the weight of the load evenly in the cart.
6. Always test to make sure your vehicle has adequate towing and braking capabilities when towing a load in your cart. Use extra caution when operating on slopes.
7. Operate at reduced speed when towing a load.
8. The 45-0350 cart should not exceed 20 m.p.h., or your vehicle's maximum safe towing speed, whichever is less. Refer to your vehicle operator's manual.
9. The 45-0351 cart should not exceed 10 m.p.h., or your vehicle's maximum safe towing speed, whichever is less. Refer to your vehicle operator's manual.



CAUTION: Do not exceed the towing capacity of the vehicle. Follow any weight limitations listed in the vehicle operator's manual.

10. To dump material from the cart, remove the tailgate by lifting it straight up and out from between the guides. Release the spring latch on the tongue by pulling the latch lock lever forward, away from the cart. The cart bed will then tilt backwards to empty its contents. After emptying, pull the front of the bed down toward the cart tongue until the latch snaps into place. Replace the tailgate if desired.



CAUTION: To avoid possible injury, before releasing the latch be sure that no one is near the cart.

MAINTENANCE

1. Check for loose fasteners before each use.
2. At the beginning of each season, lubricate the latch, the latch pivot bolt, and the bearings in the walking beams with a light machine oil.
3. Grease the wheel bearings periodically. Use general purpose grease.
4. Keep tires filled to the pressure recommended on the tires.

CART MODEL SPECIFICATIONS

MODEL 45-0350 ATV CART

Tires: 18.00" x 9.5" Knobby Tread
Axle: 1.0" Dia. High Carbon Steel
Capacity: Up to 1000 Lbs. Max.
Approx. Sh. Wt. 208 Lbs.

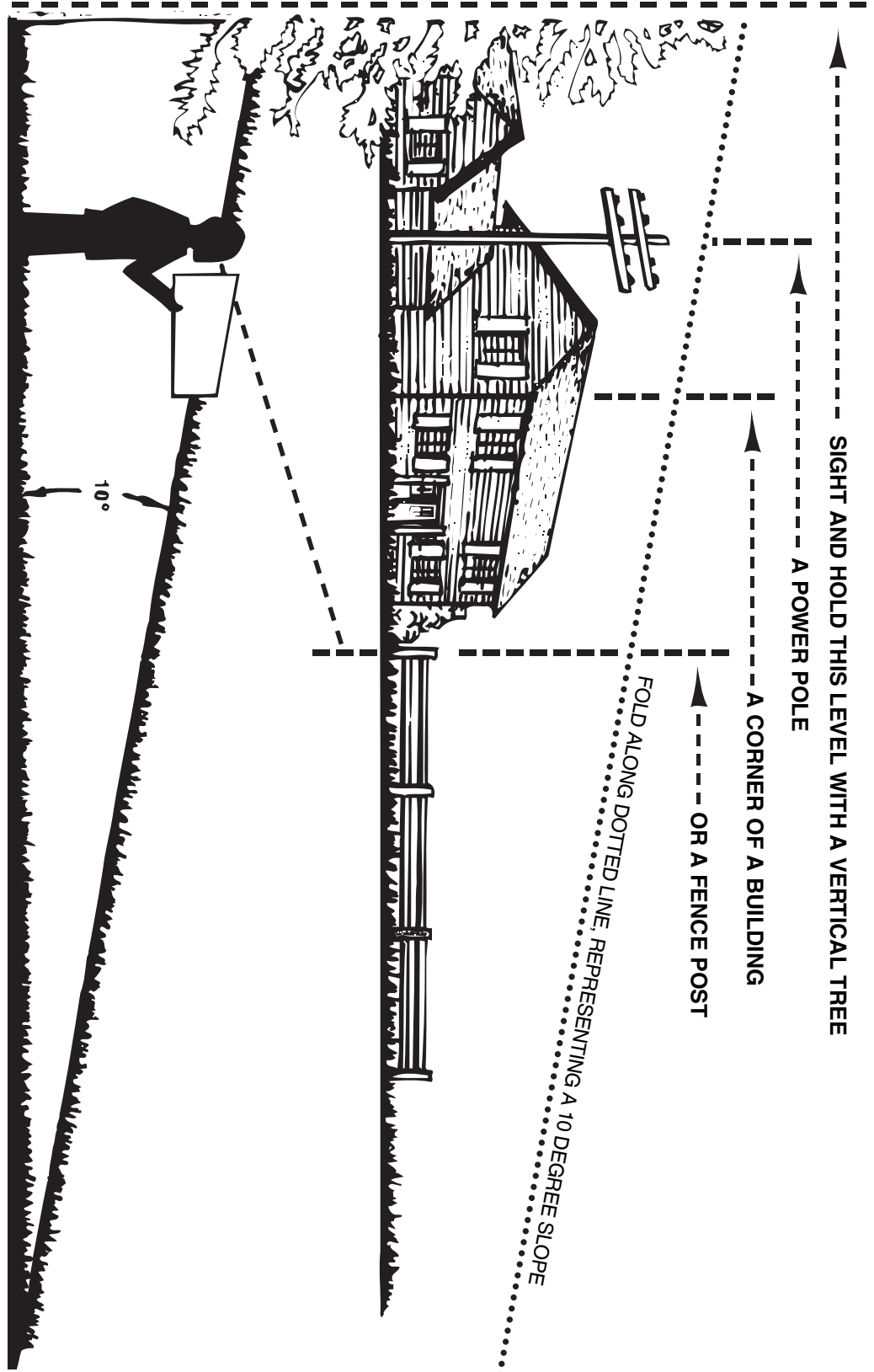
MODELS 45-0351 FARM CART

Tires: 16.00" x 6.5" Turf Tread
Axle: 1.0" Dia. High Carbon Steel
Capacity: Up to 1000 Lbs. Max.
Approx. Sh. Wt. 195 Lbs.

SLOPE GUIDE FOR TRACTORS

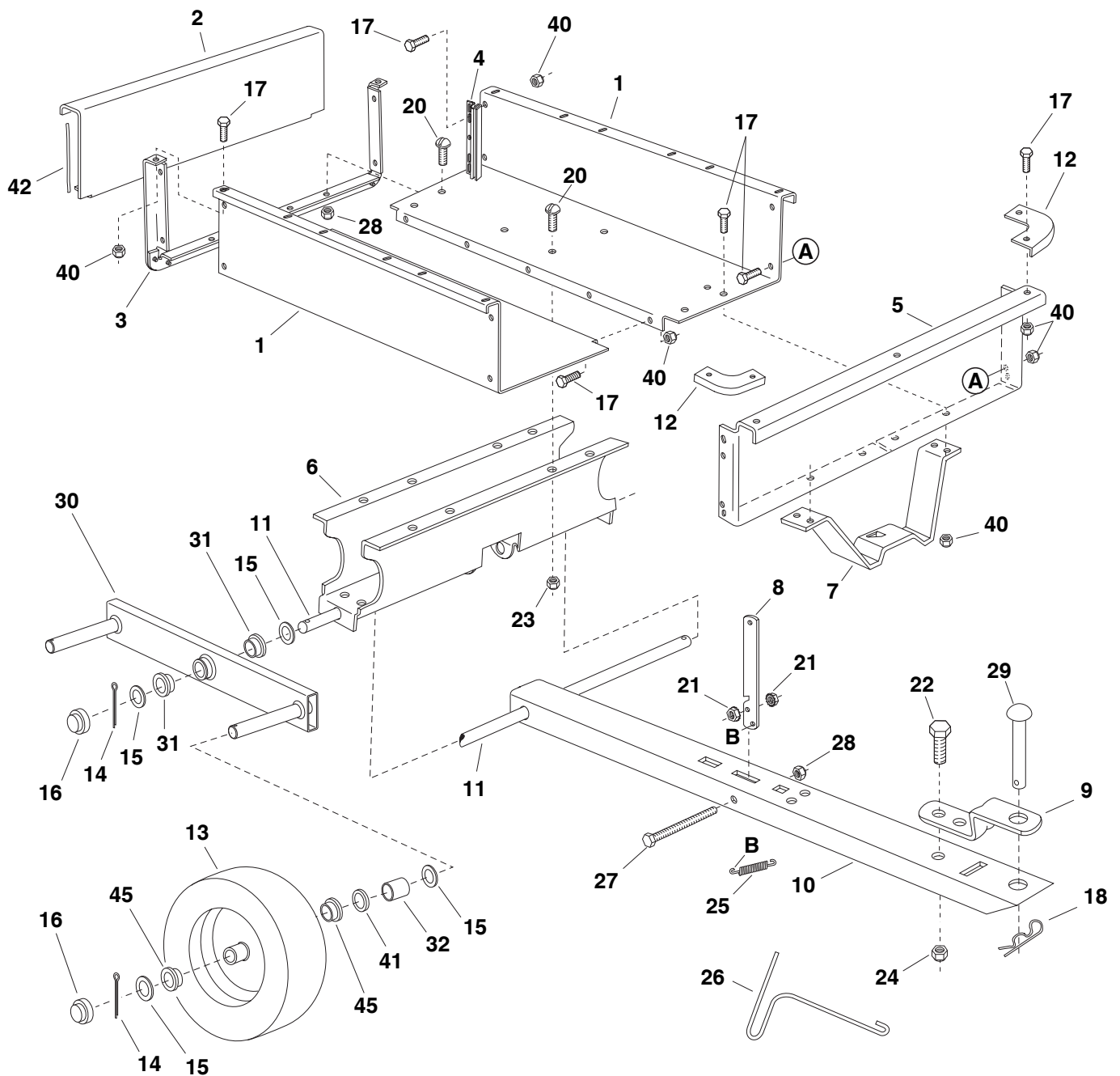
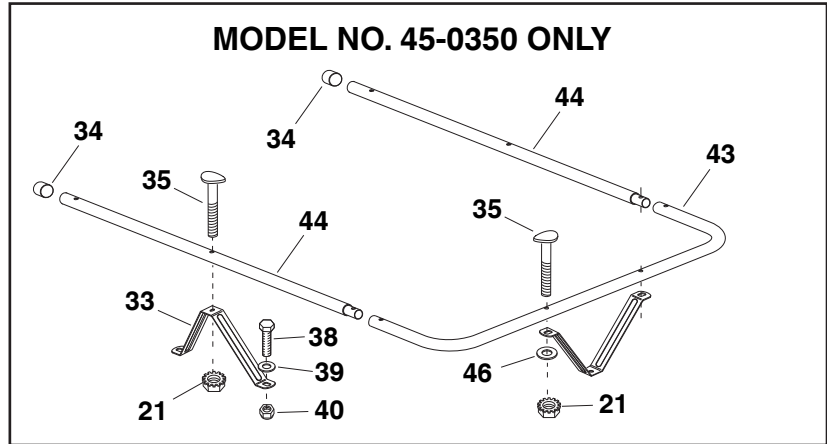
(Keep this sheet in a safe place for future reference.)

Use this guide to determine if a slope is safe for the operation of your tractor and cart. Refer also to the instructions in your vehicle owners manual.



CAUTION: DO NOT OPERATE YOUR TRACTOR AND CART ON A SLOPE IN EXCESS OF 10 DEGREES. BE SURE OF YOUR TRACTOR'S TOWING AND BRAKING CAPABILITIES BEFORE OPERATING ON A SLOPE. AVOID ANY SUDDEN TURNS OR MANEUVERS WHILE ON A SLOPE.

REPAIR PARTS FOR CART MODEL NO'S. 45-0350, 45-0351



REPAIR PARTS FOR CART MODEL NO'S. 45-0350, 45-0351

REF. NO.	PART NO.	DESCRIPTION	45-0350	45-0351
1	25112	Cart Body	2	2
2	23502	Tailgate	1	1
3	62458	Tailgate Reinforcement Bracket	1	1
4	23548	Tailgate Guide	2	2
5	23492	Front Panel	1	1
6	25106	Wheel Support	1	1
7	24497	Latch Stand Bracket	1	1
8	24498	Latch Lock Lever	1	1
9	23014	Hitch Bracket	1	1
10	25114	Draw Bar Tongue	1	1
11	25107	Axle, 1" Dia.	1	1
12	23484	Front Corner Cap	2	2
13	43594	Wheel, 16/6.5" x 8.00 (45-0351)	---	4
	48906	Wheel, 18/9.5" x 8.00 (45-0350)	4	---
14	43093	Cotter Pin, 1/8" Dia. x 1-1/2" *	6	6
15	43601	Washer, Flat 1" (Thin)	20	20
16	43014	Hub Cap	6	6
17	43866	Hex Bolt, 1/4-20 x 5/8" *	21	25
18	43343	Hair Cotter Pin, 1/8 (#4) *	1	1
20	43814	Truss Hd. Bolt, 5/16-18 x 3/4" Lg. *	12	12
21	46980	Hex Nut, 5/16-18 (SEMS)	10	2
22	43001	Hex Bolt, 3/8-16 x 1" Lg. *	1	1
24	HA21362	Nylock Nut, 3/8-16 *	1	1
25	47408	Extension Spring	1	1
26	47622	Spring Puller Tool	1	1
27	47407	Hex Bolt, 5/16-18 x 4" *	1	1
28	47810	Nylock Nut, 5/16-18*	13	13
29	48948	Hitch Pin	1	1
30	64873	Walking Beam (Includes #44488)	2	2
32	46289	Spacer (45-0350)	4	---
	44678	Spacer (45-0351)	---	4
33	25111	Rail Brace	7	---
34	44481	Vinyl Cap	2	---
35	44947	Curved Hd. Bolt, 5/16-18 x 1-5/8"	8	---
38	43012	Hex Bolt, 1/4-20 x 3/4"	13	---
39	43088	Flat Washer, 1/4"	13	---
40	47189	Nylock Nut, 1/4"	34	25
41	1540-58	Washer, 1.03" x 1.38" x .120" (Thick)	4	---
42	48949	Protective Edging Strip	2	---
43	48951	Front Rail	1	---
44	48950	Side Rail	2	---
45	44488	Wheel Bearing (#43594 Wheel)	4	12
	65408	Wheel Bearing Kit (#48906 Wheel)	4	---
46	43081	Flat Washer, 5/16"	2	---
	48902	Owner's Manual	1	1

* Purchase Common Hardware Locally

SpeedPart *the fastest way to purchase parts* www.speedepart.com

SpeedEPart *the fastest way to purchase parts* www.speedepart.com

REPAIR PARTS

Agri-Fab, Inc.
303 West Raymond
Sullivan, IL. 61951
217-728-8388
www.agri-fab.com

This document (or manual) is protected under the U.S. Copyright Laws and the copyright laws of foreign countries, pursuant to the Universal Copyright Convention and the Berne convention. No part of this document may be reproduced or transmitted in any form or by any means, electronic or mechanical, including photocopying or recording, or by any information storage or retrieval system, without the express written permission of Agri-Fab, Inc. Unauthorized uses and/or reproductions of this manual will subject such unauthorized user to civil and criminal penalties as provided by the United States Copyright Laws.